

WYSING ARTS CENTRE – SITE MAP

- 1** Reception: Information & sales. Toilets, accessible toilet & baby changing facilities
- 2** Gallery: Exhibitions & events
- 3** Open Studio: Events
- 4** Imagining Shed: Family activities

OUTDOOR ARTWORKS

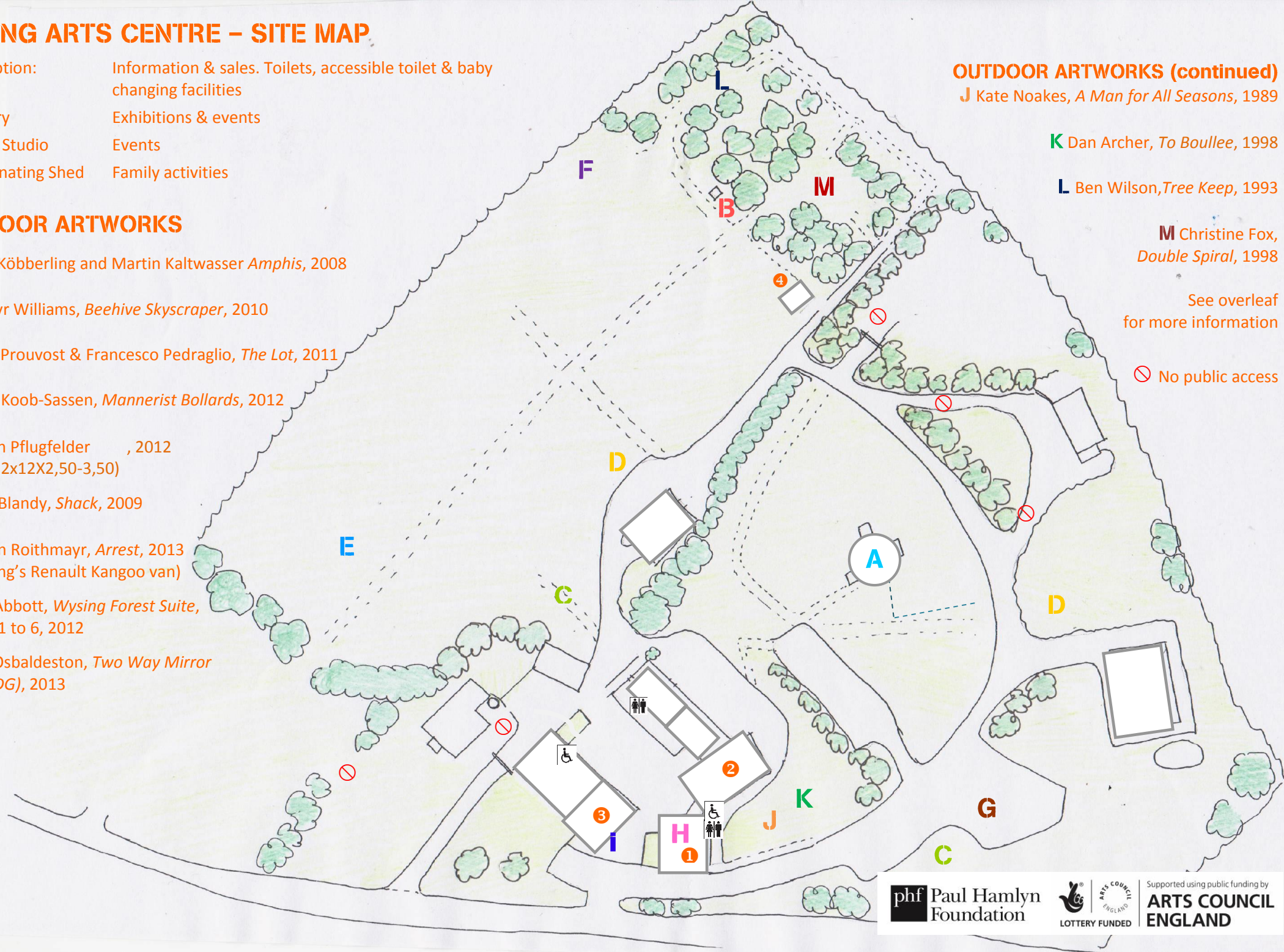
- A** Folke Köbberling and Martin Kaltwasser *Amphis*, 2008
- B** Bedwyr Williams, *Beehive Skyscraper*, 2010
- C** Laure Prouvost & Francesco Pedraglio, *The Lot*, 2011
- D** Hilary Koob-Sassen, *Mannerist Bollards*, 2012
- E** Nilsson Pflugfelder, 2012 (12x12x12X2,50-3,50)
- F** David Blandy, *Shack*, 2009
- G** Florian Roithmayr, *Arrest*, 2013 (Wysing's Renault Kangoo van)
- H** Luke Abbott, *Wysing Forest Suite*, Parts 1 to 6, 2012
- I** David Osbaldeston, *Two Way Mirror* (after DG), 2013

OUTDOOR ARTWORKS (continued)

- J** Kate Noakes, *A Man for All Seasons*, 1989
- K** Dan Archer, *To Boullée*, 1998
- L** Ben Wilson, *Tree Keep*, 1993
- M** Christine Fox, *Double Spiral*, 1998

See overleaf for more information

⊘ No public access



OUTDOOR ARTWORKS

A Folke Köbberling and Martin Kaltwasser, *Amphis*, 2008 *Amphis* is a structure that embraces the ideas of many people in one big patchwork 'house'. Every element was built using materials donated to the project and by a community of 40 volunteers.

B Bedwyr Williams, *Beehive Skyscraper*, 2010 Williams' sculpture *Beehive Skyscraper* could be one of the tallest beehives in the world. The sculpture is based on the hive design of William Broughton Carr, a design which has sadly fallen out of fashion with beekeepers because of the complexity of its construction and use.

C Laure Prouvost & Francesco Pedraglio, *The Lot*, 2011 Two billboards arose from the artists' short story *The Lot* which humorously depicted a fictitious department's desperate work environment; an obscure camp dedicated to search unrecognizable objects and dig abstract ideas from muddy meadows.

D Hilary Koob-Sassen, *Mannerist Bollards*, 2012 Produced during Hilary's residency in 2011 as part of the Department of Psychedelic Studies. Wrought steel sculptures at an endpoint amidst Wysing's winding concrete, Hilary Koob-Sassen's *Mannerist Bollards*, 2012, also serve as a stage for a performance and as bolt plates capable of supporting a thousand kilos of sculptural elaboration. The sculpture's performance *Twisting at the End of a Story* elaborates figures and phrases of stoppage and grasping-out to punctuate a space between cultural narrative epochs.

E Nilsson Pflugfelder, 2012 (12x12x12X2,50-3,50) The work of Nilsson Pflugfelder is situated on the intersection of critical spatial design, architecture, art and discourse. As a response to the site they have proposed a large, gleaming outdoor structure to be situated in the grounds of Wysing. This galvanised steel triangle will act as a folly-like space with no obvious function and no obvious entrance. (unrealised project).

F David Blandy, *Shack*, 2009 Shack was created for the film 'Crossroads' which began as an investigation into the mythology surrounding the legendary bluesman Robert Johnson. At our 2010 music festival Blandy performed the soundtrack to Crossroads live.

G Florian Roithmayr, *Arrest*, 2013 (Wysing's Renault Kangoo van) Produced during Florian's residency in 2013 as part of Convention T Using a new technique beloved by car-modification communities, the artist has transformed Wysing's otherwise unremarkable Renault Kangoo into a new mobile artwork.

H Luke Abbott, *Wysing Forest Suite, Parts 1 to 6*, 2012 Composed during Luke's time as our first ever musician-in-residence in 2012 as part of The Forest. Please take a set of headphones and mp3 player from reception to listen in Wysing's grounds.

I David Osbaldeston, *Two Way Mirror (after Dan Graham)*, 2013 Produced during David's residency in 2013 as part of Convention T. Like a piece of irreverent graffiti. The work uses the same handwritten words in two different configurations either side of a pair of glass to prompt different states of looking or seeing.

J Kate Noakes, *A Man for All Seasons*, 1989

K Dan Archer, *To Boulle*, 1998

L Ben Wilson, *Tree Keep*, 1993

M Christine Fox, *Double Spiral*, 1998