

WYSING ARTS CENTRE  
FOX ROAD BOURN  
CAMBRIDGE CB23 2TX  
WWW.WYSINGARTSCENTRE.ORG

T + 44 (0) 1954 718881  
INFO@WYSINGARTSCENTRE.ORG

April 2018

WYSING ARTS CENTRE  
EDUCATION MANAGER

The Education Manager is part of Wysing's programme team and works alongside Wysing's two Curators, the Director, and Head of Partnerships to devise a dynamic and integrated programme of activity that has learning and knowledge exchange at its centre. This new, permanent, position builds upon the work that has been developed over recent years, in particular through the young peoples' programme, Circuit. Alongside delivering an ongoing programme for children and young people, families, schools and colleges, at Wysing's Bourn site, the post-holder will deliver offsite activity in rural Cambridgeshire and Fenland that aims to support children and young people to develop their creative potential. The Education Manager will be a highly motivated self-starter, driven by an interest in the relevance of the arts to the lives of children and young people. The deadline for applications is Sunday 20 May 2018. Interviews will take place on Wednesday 30 May at Wysing Arts Centre.

CONTENTS

Pages	2-3	The Role
Pages	4-7	About Wysing Arts Centre
Page	8	Wysing People
Page	9	Recruitment Process



## THE ROLE

Position: Education Manager  
Salary: £27,000 per annum pro rata  
Hours: Part time, 3-4 days a week (negotiable)  
Contract: Permanent  
Reporting to: Director

The Education Manager is part of Wysing's programme team and works alongside Wysing's two Curators, the Director, and Head of Partnerships to devise a dynamic and integrated programme of activity that has learning and knowledge exchange at its centre. This new, permanent, position builds upon the work that has been developed over recent years, in particular through the young peoples' programme, Circuit. Alongside delivering an ongoing programme for children and young people, families, schools and colleges, at Wysing's Bourn site, the post-holder will deliver offsite activity in rural Cambridgeshire and Fenland that aims to support children and young people to develop their creative potential. The Education Manager works closely with Wysing's network of artists to develop activity, alongside partner organisations across the region including those in the youth sector. The Education Manager will be a highly motivated self-starter, driven by an interest in the relevance of the arts to the lives of children and young people. The role will involve some travelling across the Eastern region. The post-holder will be subject to an enhanced DBS check.

## Key Responsibilities

- Working within the resources of Wysing's programme team, the artistic programme and Wysing's site, develop, manage and co-ordinate the delivery of education programmes on behalf of the organisation.
- Deliver Circuit Fens, a new programme of activity funded by Esmée Fairbairn Foundation, designed to reach children and young people living in rural Fenland over the next two years.
- Develop the children and young peoples' programme AMPlify, working with the colleagues and using Wysing's onsite recording studio, recording equipment and digital platforms.
- Co-ordinate visits from schools and further education colleges and organise teachers' events to support learning and activity related to the National Curriculum.
- Co-ordinate the delivery of an annual programme of workshops for children and families in relation to the artistic programme of residencies and exhibitions.
- Support young artists of all ages, including through delivering Arts Award support sessions and drive recruitment for Arts Award.

## Main Tasks

- Using Wysing's physical and intellectual resources and partnerships, develop, manage and co-ordinate the delivery of young peoples' programmes both on and offsite.
- Maintain and develop new partnerships with a wide range of local groups to ensure hard to reach young people have access to programmes.
- Promote artistic programmes and facilitate schools and colleges to use Wysing's site as a teaching resource by developing and tailoring activity to the national curriculum, programming teacher's evenings and delivering Arts Award and Arts Award support sessions.
- In collaboration with programme staff, organise ongoing activity for children and their families in relation to annual programme themes, residencies and exhibitions.
- Contribute to the development of other learning and audience development programmes.
- Support the delivery of Wysing's audience development plan, as per the current Business Plan, developing opportunities to provide new access points and increase the reach of Wysing's programme.

- Provide a safe, relevant and supportive environment for children and young people to access Wysing's programme.
- Ensure that adequate evaluation for all children and young people's programmes is in place and used as a resource to provide feedback, reporting and take forward ideas and improvements.
- Prepare risk assessments and participant sign-in information for all activity.
- Be the lead child protection officer for Wysing and review child protection procedures.
- Manage budgets and timeframes effectively.
- Provide documentation, evaluation and reporting of the projects.
- Represent the organisations to stakeholders and funders, attending external meetings as required.
- Provide written content for funding bids and for Wysing's website and other marketing material.
- Key holding responsibilities.
- Work in accordance with Wysing Arts Centre's Health & Safety and Equal Opportunities Policies at all times.

#### Essential knowledge, skills and experience

- A degree in an arts-related subject or equivalent experience.
- Experience of working with children and young people in an arts or community environment.
- Experience of developing peer-led programmes with and for children and young people.
- Understanding of youth services and youth support networks.
- Experience of coordinating a learning programme in a gallery or museums environment.
- Evidence of working directly with artists.
- Experience of monitoring projects, evaluating and report writing for fundraising and funding bodies.
- Excellent project management, communication and advocacy skills.
- Excellent verbal and written communication and interpersonal skills.
- Experience of building effective partnerships.
- Excellent organisational skills and the ability to prioritise and work to deadlines.
- Ability to be creative and work within budgetary limits.
- Enthusiastic and committed to the arts with knowledge of contemporary visual arts practice.
- A creative and flexible approach and the confidence to develop ideas independently as well as part of a team.
- An understanding and empathy with the aims of Wysing Arts Centre and a commitment to developing new audiences for art.
- Good level of computer literacy.
- Flexible in working arrangements and able to work regular evenings and weekends.
- Ability to represent the organisation to a wide range of stakeholders.

#### Desirable knowledge, skills and experience

- Experience of updating website content and marketing using social media.
- Full driving license & access to a car for work use.

*"Wysing, a modernist campus which means business... a hotbed of study, a hub of artistic industry, a nationwide resource for art theory and a factory of inspiration"* Mark Sheerin, *Artdependence Magazine*

#### WYSING'S VISION

To be a progressive and inclusive arts organisation that develops new ways to support artists, and to enable art and ideas to reach a wide range of people in unexpected ways.

#### WYSING'S MISSION

To enable artists of all backgrounds and ages to thrive, by providing a discursive environment within which they can experiment, make new work, develop new networks and collaborators, and reach new audiences.

#### WYSING'S VALUES

We believe that art and artists have a vital role to play in society and that opportunities in the arts have not always been fairly shared or accessed by all. Working closely with artists from a diversity of backgrounds and at different points in their careers, we develop programmes that offer time and space for personal development, artistic growth and experimentation, and access to supportive networks. We are committed to establishing national and international partnerships and collaborations that support innovative and experimental art to be created, and for art to be experienced by existing and new audiences.

#### ORGANISATIONAL OBJECTIVES 2018 – 2022

1. **ARTISTS:** Enable artists of all backgrounds to thrive
  - Develop a range of programmes that support artists and artistic practice
  - Increase the diversity of artists we support
  - Develop local, national and international strategic partnerships and networks
2. **AUDIENCES:** Enable a range of audiences to access contemporary art
  - Deliver high quality public and education programmes
  - Be strategic in targeting audiences for art
  - Work beyond our geographic boundaries
3. **ASSETS:** Enable financial and organisational resilience
  - Develop and sustain new models of self-generated and contributed income
  - Invest in staff development and governance
  - Maximise the potential of our unique site

#### STRATEGIC OVERVIEW

Through its innovative work, Wysing influences the development of the visual arts sector in the UK, Europe and, increasingly, the wider world. As a respected and well-connected institution operating outside the usual gallery system and urban context, Wysing is uniquely positioned to develop programmes that provide opportunities for the exchange of knowledge and ideas, and which reflect on the role of art, artists, and arts organisations in society; acting as a testing ground for new ideas that are fed productively back into the art mainstream through extensive networks and partnerships.

Integral to Wysing's ethos is the provision of space, support and finance to enable a diversity of artists to progress their ideas. Artists of all backgrounds and at all stages in their lives participate in a range of programmes that are developed in response to their needs. Artists often speak of Wysing as a defining

moment in the development of their practices. In addition, there are specialist programmes for young artists, which include free studio provision, mentoring, workshops and public presentations. Wysing delivers a range of public programmes that provide different entry points for a wide range of interests and abilities to access contemporary art. Public programmes reflect the complexities of contemporary life and have included explorations in race, gender, ecology, societal issues, and alternative educational and learning structures. To develop programme content Wysing draws on the resources of neighbouring Cambridge University as well as its significant artist alumni which includes Turner Prize winners and artists who have been awarded the prestigious Paul Hamlyn Award.

Wysing ensures that the innovative work developed by artists participating in its programmes reaches a wide range of audiences through digital and online initiatives, and through a range of partnerships that enable it to reach audiences regionally, nationally and internationally. Established in 1989, Wysing's large site in rural Cambridgeshire has been significantly developed and encompasses artist studios, a large gallery, a music recording studio, educational and project spaces, onsite accommodation, ceramics facilities, outdoor space with sculpture, and a café.

*'Wysing has established a brave and imaginative emphasis on experimentation and critical discussion in which the Wysing community and the broader community, are given every opportunity to participate. They offer the practical support of space, time and resources for artists to engage with the more challenging aspects of their creative activities and to bring these to fruition.'* Phyllida Barlow CBE, Artist representing the UK at the Venice Biennial 2017

## 2018 PROGRAMMES

### ARTIST RESIDENCIES

Following an Open Call for applications in December 2017, the artists selected to be in-residence across 2018 are:

- Camae Ayewa, aka Moor Mother, will be in-residence ahead of Wysing's 2018 music festival at which she will be performing.
- Leah Clements and collaborators Rebecca Bligh, Uma Breakdown, Elena Colman, Alice Hattrick and Lizzy Rose will form a new network of art practitioners who identify as 'crip', disabled, or otherwise non-conforming to standard ideas of good health.
- Phoebe Collings James and Last Yearz Interesting Negro/ Jamila Johnson-Small will create a collaborative work embodied through a symbiotic relationship between dance, music and sculpture, asking what an anti-assimilationist practice might look and sound like in 2018.
- Brandon Covington Sam-Sumara, aka N-Prolenta, will produce a monograph that will incorporate fifteen short essays.
- Julia Crabtree & William Evans, previous residency artists returning to Wysing to work with invited collaborators to expand upon key themes from recent research including botany, fungal ecologies, co-evolving, feminist sci-fi, bodies and critters.
- Formerly Called (Tamar Clarke-Brown, Ibrahim Cissé, Atum Farah, Cédric Fauq, Georgia Lucas-Going, Elijah Maja, Olu Ogunnaike, Cindy Sissokho, Kefiloe Siwisa, Dominique White, and others) will meet at Wysing across several retreats to reinforce their existing network of People of Colour operating within the art world and beyond.
- Anna McMahan and Salote Tawale will research and develop new UK networks, including accessing collections of Fijian cultural objects held in Cambridge University Museums and developing a podcast series through interviews on gender, race, post-colonial theory, queerness, family, and food.

- Joe Moran will work with dancers and dramaturges to develop a body of research traversing expanded choreography, discourse and form conceived in a spirit of urgency, collectivity and self-definition.
- Sonic Cyberfeminisms (Annie Goh, Marlo De Lara, Jane Frances Dunlop, Natalie Hyacinth, Miranda Iossifidis, Frances Morgan, Shanti Suki Osman and Marie Thompson) will develop a series of podcasts, broadcasts and a zine.
- Tessa Norton and family will be in-residence during which Norton will explore how the experience of parenthood has changed her perception of time, and the implications that this renewed perspective has for thinking about art.
- Nastja Säde Rönkkö and family will be in-residence during which Rönkkö will be developing an ambitious new project to be realised in 2018.
- Rachael Rosen working with a small team of coders and performers including Henry Rodrick, will develop a performance and playable archive for *pOrtals*; an ongoing collaborative world building and storytelling exercise.
- Liv Wynter will work with a script writer and stage hand to develop a new installation and performance piece.

#### EXHIBITION – MORE OF AN AVALANCHE 11 FEBRUARY TO 8 APRIL

The 2018 programme launched with the group exhibition, more of an avalanche, which presented new work produced at Wysing in 2017, alongside existing and historical work, that considers what it means to have political sensitivity in the current political climate. The exhibition takes the term "snowflake" as a starting point, a term used pejoratively by the political right to code dissent as whining, vulnerability as over-sensitivity and the right to protest as a willingness to take offence. Across Wysing's gallery and a screening room, works take sensitivity and fragility as a starting point and look for strength in numbers and strength in networks. With artists Helen Cammock, Ilker Cinarel, Jesse Darling, Maryam Monalisa Gharavi, Juliet Jacques, Carolyn Lazard, Zinzi Minott, The Newsreel Collective, Harold Offeh, Raju Rage, S1 Portland/Women's Beat League, Syllabus III and Liv Wynter.

#### EXHIBITION – WORLDS AMONG US 7 OCTOBER TO 9 DECEMBER.

Worlds Among Us is an exhibition of a new commission which emerged from a specialist retreat at Wysing in December 2017. Working with partners, The Mechatronic Library, FACT Liverpool and QUAD, Derby, the retreat supported artists to work with new digital technologies such as Augmented Reality, Virtual Reality and Game-Engines. Alongside artists developing their practice through these new technologies, the commissions reflect on the philosophical and political implications of their increasing adoption by society.

#### KOREAN POTTERY CAMP

Wysing is working with Grizedale Arts to deliver a residency that will encompass a 'pottery camp' and conference in June/July. The camp will bring Korean and UK artists working with ceramics together fire a rare anagama kiln on Wysing's site. The Korean artists will be selected along with Korean partners during a research trip and residency by Adam Sutherland and UK artists Aaron Angell and Mark Essen, in April 2018.

#### MUSIC FESTIVAL 1 SEPTEMBER

The ninth edition of our annual festival of art and music, which has received 5 star reviews in The Guardian for the past two years, returns for twelve hours of art and music on a series of stages across Wysing's site. The initial line-up, which will include key historic acts alongside contemporary artists and musicians, will be announced in spring 2018.

#### WYSING POLYPHONIC STUDIO

Our new Wysing Polyphonic recording studio will open in early 2018. The studio includes a vocal booth, a fully operational studio including software Ableton and Logic, and access to a larger space for large scale set-ups. Alongside being available to residency artists, the studio will be open to hires, including combined with accommodation in our onsite farmhouse.

#### NEW COMMISSION

Ravioli Me Away (Sian Dorrer, Rosie Ridgway and Alice Theobald) have been working with us across 2017 and 2018 developing an ambitious new musical production that will be premiered in early 2019. To date this has included a public event to develop characters for their new opera, View from Behind the Futuristic Rose Trellis, and recording tracks in our new Wysing Polyphonic recording studio.

#### PARTNERSHIP PROJECTS – SYLLABUS III/IV

Syllabus III is the third year of our alternative learning programme, delivered by Wysing in partnership with Eastside Projects, Iniva, New Contemporaries, S1 Artspace, Spike Island and Studio Voltaire. Syllabus III is led by artists Jesse Darling and Harold Offeh, and the selected participants for the ten-month programme are Frederica Agbah, Chris Alton, Conor Baird, Ilker Cinarel, Phoebe Davies, Freya Dooley, Rose Gibbs, Jill McKnight, Ben Sanderson and Karis Upton. The next Open Call for Syllabus IV will go out in spring 2018.

#### PARTNERSHIP PROJECTS – NEW GEOGRAPHIES

Wysing is leading 'New Geographies', an Arts Council England funded project to create a new map of the East of England based on personal thoughts, reflections and stories of unexplored or over-looked places. The map forms the basis of 10 major site-responsive art commissions across the East of England, to be delivered over the next two years. The first phase of the project invited members of the public to nominate locations for the map, over a three-month nomination process in Summer of 2017. During 2018 and 2019 ten national and international artists will create new works in response to the locations. The first artists selected will be announced in spring 2018.

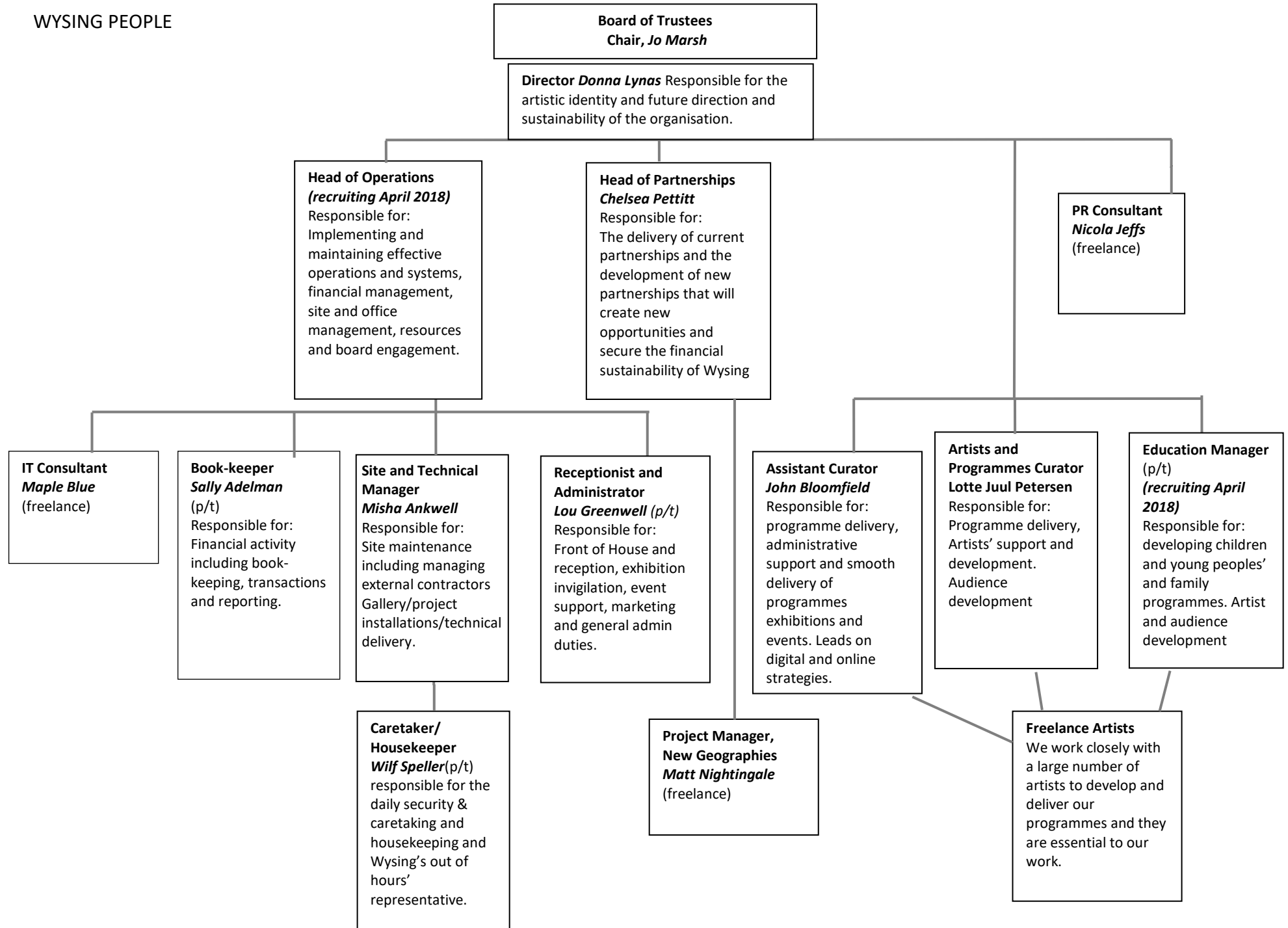
#### CIRCUIT FENS

Connecting to New Geographies, Circuit Fens, aims to reach 300 young people a year through a range of activity including: Developing peer-led programmes for and by young people; Developing supportive networks to sustain young people living in remote rural locations; Skills development and training workshops; Connecting young people to established artists at Wysing through workshops; Supporting the delivery of the Arts Award programme; Supporting young people into careers in the arts.

#### AMPLIFY

AMPLify will create accessible programmes that empowers children and young people living in rural Cambridgeshire and Fenland, enabling their voices to be heard through a range of activities including: Skills development and training using digital tools and media; Creating pathways into employment through partnerships with Cambridge based online gaming companies; Production of reviews, interviews and tours of Wysing exhibitions and events for and by young people; Connecting young people to older generations through interviews to build cross generational understanding.

WYSING PEOPLE





## RECRUITMENT PROCESS

The deadline for applications is Sunday 20 May 2018.

Interviews will take place on Wednesday 30 May at Wysing Arts Centre.

Applications should be made online via Submittable, [here](#).

Once you have set up a Submittable account you can return to your application any time up until the deadline which is midnight on Sunday 20 May 2018. Please allow enough time to approach us with any questions or queries in using the Submittable website. We are not able to accept applications after the deadline.

Please include:

1. Details of your previous employment and relevant work experience. List each employer and give a short description of your role alongside dates of employment and reason for leaving.
2. What interests you about the post and working at Wysing Arts Centre? Please use this section to articulate why you want to work at Wysing.
3. Information on how your skills, abilities, and experience match the key points in the job description and person specification.
4. Your contact details.
5. Contact details for two referees.

Wysing's Director, Donna Lynas, is available to have an informal conversation about the position. Please call 01954 718881 or email [donna.lynas@wysingartscentre.org](mailto:donna.lynas@wysingartscentre.org)