

WYSING ARTS CENTRE SPACE HIRE

Wysing Arts Centre was established in 1989 through a generous act of philanthropy with the aim of establishing an inspirational workplace for artists. 30 years on, Wysing is valued as a national resource that supports artists to make ambitious new work, develop new networks, and reach new audiences.

Wysing's thriving cultural campus of ten buildings across an 11acre rural site hosts experimental residencies for UK and international artists and delivers a critically acclaimed public programme of gallery exhibitions and events, including conferences, symposia, workshops and music events. The centre has 11 acres of open space, 10 separate buildings including a 17th century farmhouse and RIBA award winning studio building, plus a large gallery and up to 30 visual artists on site at any one time.

SPACES FOR HIRE

Wysing Reception Space



For large events this space provides a highly individual and contemporary venue. The space has floor to ceiling glass sliding doors on two sides making it light and airy and particularly pleasant in summer. The space is self contained with a small adjoining kitchen for catering, plus two washrooms.

Dimensions: 8 x 10m sq (73.7 m sq) usable space
Capacity: 50 theatre style (110 standing maximum)
Equipment: Projector with necessary cables, free standing screen; DVD player, CD player.
PA system on request at additional charge.

Rates: Half day £150 (9.30am-1.30pm or 1-5pm)
Full day £250 (9.30am-5.30pm)
Evening £275 (6-11pm)

Wysing Open Studio



A spacious and quiet room in our studio building. This contemporary space is ideal for meetings, presentations and away days with smaller groups.

Dimensions: 7.5 x 8.13m sq (61.5m sq)

Capacity: 20 people Boardroom style, 100 standing

Equipment: Projector with necessary cables, screen; DVD player, CD player

Rates: Per hour £30

Half day £120 (9.30am-1.30pm or 1-5pm)

Full day £200 (9.30am-5.30pm)

Evening £225 (6-11pm)

Hot Desk Room

Suitable for use as a small meeting room, breakout area or a workspace, the hot desk room provides basic bench space and chairs. There are ample power sockets in the room and it is designed to accommodate freelancers who can bring their own laptops. Wifi is provided as part of your room hire.



Dimensions: 4.5 x 4m
Capacity: 6 work stations
Equipment: Printer and scanner

Rates: Per hour £15
Half day £30 (9.30am-1.30pm or 1-5pm)
Full day £50 (9.30am-5.30pm)
Evening £75 (6-11pm)

Amphis



In 2008 Wysing Arts Centre invited Berlin-based artists Folke Köbberling and Martin Kaltwasser to create an 'amphitheatre' using only discarded, found and recycled materials. Working with over 40 volunteers, the artists created this incredible patchwork 'house' in less than six weeks. Amphis is an inspiring structure and during the summer months is available for use as a creative and innovative thinking space as part of your booking with us.

Dimensions: Approx 42 sqm

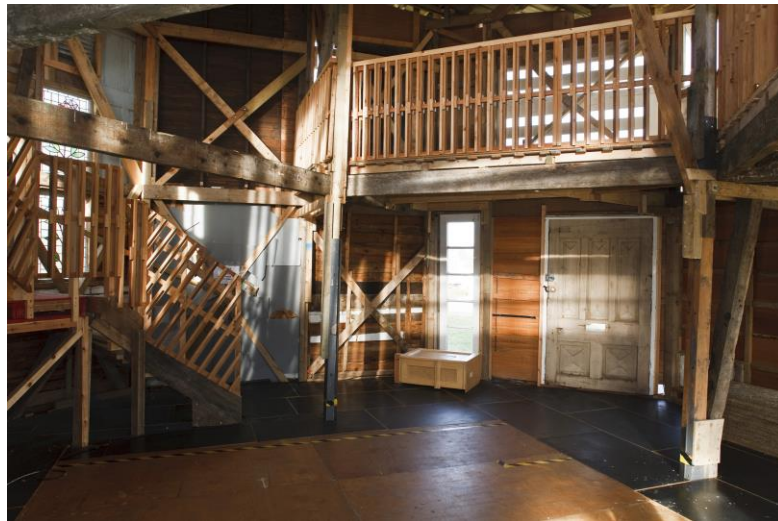
Capacity: 100 standing

Rates: Per hour £15

Half day £90 (9.30am-1.30pm or 1-5pm)

Full day £150 (9.30am-5.30pm)

Evening £175 (6-11pm)



Ceramics Studio



The ceramics studio is the home of The Grantchester Pottery (artists Phil Root and Giles Round) and the interior has been decorated by them. The studio has a long history of supporting some of the UK's most exciting artists to develop ceramic practices, including Emma Hart and Aaron Angell.

Dimensions: 6.9 x 5.3m

Capacity: Up to 8 people

Equipment: 3 pottery wheels, including one kick wheel
1 kiln
A number of moulds

Additional support: A ceramic technician can be booked for £150-180 a day, or specifically to support kiln firing.

Rates: Per hour £30
Half day £50 (9.30am-1.30pm or 1-5pm)
Full day £100 (9.30am-5.30pm)
Evening £150 (6-11pm)
Kiln firing: £25 per firing

Please note that you will need to arrange for your own materials (clay, glazes) and we cannot provide storage space once work has been fired. All bookings will be subject to a ceramic studio health and safety induction process.

Wysing Polyphonic Studio



The Wysing Polyphonic Studio was established in 2017 to support new music and sonic works to be created at Wysing Arts Centre. The studio emerged from Wysing's annual festival of art and experimental music which has been operating since 2010, and it is the HQ of the Wysing Polyphonic record label.

The Wysing Polyphonic Studio has been designed with input from sound engineers and offers an enclosed, wooden, acoustically-treated Control Room and vocal booth. There is an option to hire a connected live room and backline equipment.

Dimensions: Control room - l 3.3m x w 2.4m x h 2.4m
 Vocal Booth - l 2.3m x w 2.4m x h 2.4m
 Live room 37.5sqm

Equipment: Please request the Polyphonic Studio hire information pack to see the full specification.

Studio engineer: £150-180 per day

Studio hire rates	Hourly	Half day	Full day (9-5pm)	Evening (6-11pm)	Weekly
Wysing Polyphonic Studio - signed artist	£30	£80	£150	£80	£550
Wysing Polyphonic Studio including live room and backline - signed artist	£60	£160	£300	£160	£1,350
Wysing Polyphonic Studio - unsigned artist	£15	£50	£80	£50	£350
Wysing Polyphonic Studio, including live room and backline - unsigned artist	£30	£100	£160	£100	£450

Wysing Grange Farmhouse



Our 17th century farmhouse comfortably sleeps up to 10 people. It has a large kitchen and lounge area and two bathrooms both with showers and one with a bath. The kitchen has a dishwasher, washing machine, tumble dryer, fridge and table top freezer. The decoration includes art works from previous residencies, a library with books donated by artists who stay with us and a wood burning stove in the lounge.

Capacity: Can sleep up to 10 people
Rooms: 1 x twin
2 x double
1 x 3 single beds
1 x 1 single bed
2 x bathrooms (one with a bath)

Amenities: Wifi
Fridge
Mini freezer
Woodstove
Heating
Fully equipped kitchen
Washing machine
Tumble dryer
Dishwasher
Towels, bedsheets and handsoap

Check in: Check in from 11am
Check out: 12noon

Rates: £30 per person per night
£25 cleaning service charge

Café/Window Room

Whilst our café is currently vacant, we are able to hire this space for parties and events. There is a large seating area and adjacent kitchen facilities.



The space has windows along the full side of the room, letting in a lot of sunlight throughout the year. The space is self contained with an adjoining commercial kitchen for catering, plus associated toilets.

Dimensions: 13 x 5.3 sq (69sqm) seating space plus kitchen (18sqm)
Capacity: 50 theatre style (110 standing maximum)
Equipment: Fully equipped commercial kitchen

Rates:

- Room only***
 - Half day £150 (9.30am-1.30pm or 1-5pm)
 - Full day £250 (9.30am-5.30pm)
 - Evening £275 (6-11pm)
- Kitchen only***
 - Half day £100 (9.30am-1.30pm or 1-5pm)
 - Full day £200 (9.30am-5.30pm)
 - Evening £275 (6-11pm)
- Room and Kitchen Facilities***
 - Half day £250 (9.30am-1.30pm or 1-5pm or as required for your event)
 - Full day £350 (9.30am-5.30pm)
 - Evening £375 (6-11pm)

Live/Work Studio

The live/work studio sits apart from the farmhouse and offers space for a more private residency experience. It is especially suitable for couples with a young child or baby. The studio comprises a bathroom with shower, small kitchenette and adjoining bedroom and large work area. The studio benefits from ample natural light, underfloor heating and ample parking nearby.



Facilities: Fully equipped kitchen with cooker, microwave and toaster
Shower
Double bed (we can also provide additional single or cot bed as required)

Rate: We offer discounted rates for self funded artists at £100 per week or £350 per month.

Commercial
Rate: Half day (9.30-1.30 or 1.00-5.00pm) £45
Full day (9.30-5.30pm) £75
Evening (6-11pm) £100
Week £150
Month £550

EXTRAS

Catering

We can provide a range of catering options including teas, coffees, biscuits, sandwich lunches or hot and cold buffets. We work with professional caterers and where possible we use products from sustainable sources. We can cater for vegetarian, vegan and gluten-free diets.

Teas and Coffees - £2.00 per head

Teas, coffees plus biscuits/cakes - £3.50 per head

Sandwich lunch - £5.00-£7.00 per head

Hot & Cold Buffets – prices on request

Additional equipment

Projector/laptop - £25

DVD player - £25

Flip chart, paper and pens - £10

PA systems – prices on request

Additional services

Site tour £150

Artist talk £75

Wi-fi

There is free wi-fi across the site and available as part of your standard booking.

MAKING A BOOKING

Planning and availability

We are very happy to discuss your requirements and help plan your event. Please contact us for more information, to check availability and prices or to arrange a viewing.

Making a booking

To make a booking call us on 01954 718881 or email us at info@wysingartscentre.org Please note a booking is not confirmed until a contract has been signed and returned, and a non-returnable deposit of £75 received.

Charity Rates

If you are a registered charity, we reduce the hire rates listed above by 25%. If you are an independent artist, please also let us know.

Terms and Conditions

- All prices exclude VAT
- Hire prices are inclusive of staffing and stated equipment. Any additional staffing requirements or equipment, once agreed with the hirer, will carry an additional charge.
- Standard hire days begin at 9am and end at 11pm.
- Hire includes Wysing's Public Liability Insurance, which covers accidents occurring on site. Wysing Arts Centre is only liable for accidents which happen due to our own negligence.



- Bookings are not confirmed until the contract has been signed and returned.
- Detailed terms and conditions are provided with the contract. Please contact us if you would like a copy in advance.

Tel: +44 1954 718881

Email: info@wysingartscentre.org

Access and Parking

Wysing is not easily accessible by public transport, as the bus stop is a 10 minute walk away and there is no pathway along part of the road. For this reason, we recommend driving or getting a nearby taxi if possible. We have ample parking on site including two accessible parking bays at the front of the site.

More directions and transport information can be found on our website here:

<http://www.wysingartscentre.org/visit>

If you have specific accessibility requirements, you can talk directly and confidentially to our Head of Operations, Ceri Littlechild. She will only share the information you provide with your permission.

Tel: +44 1954 717104